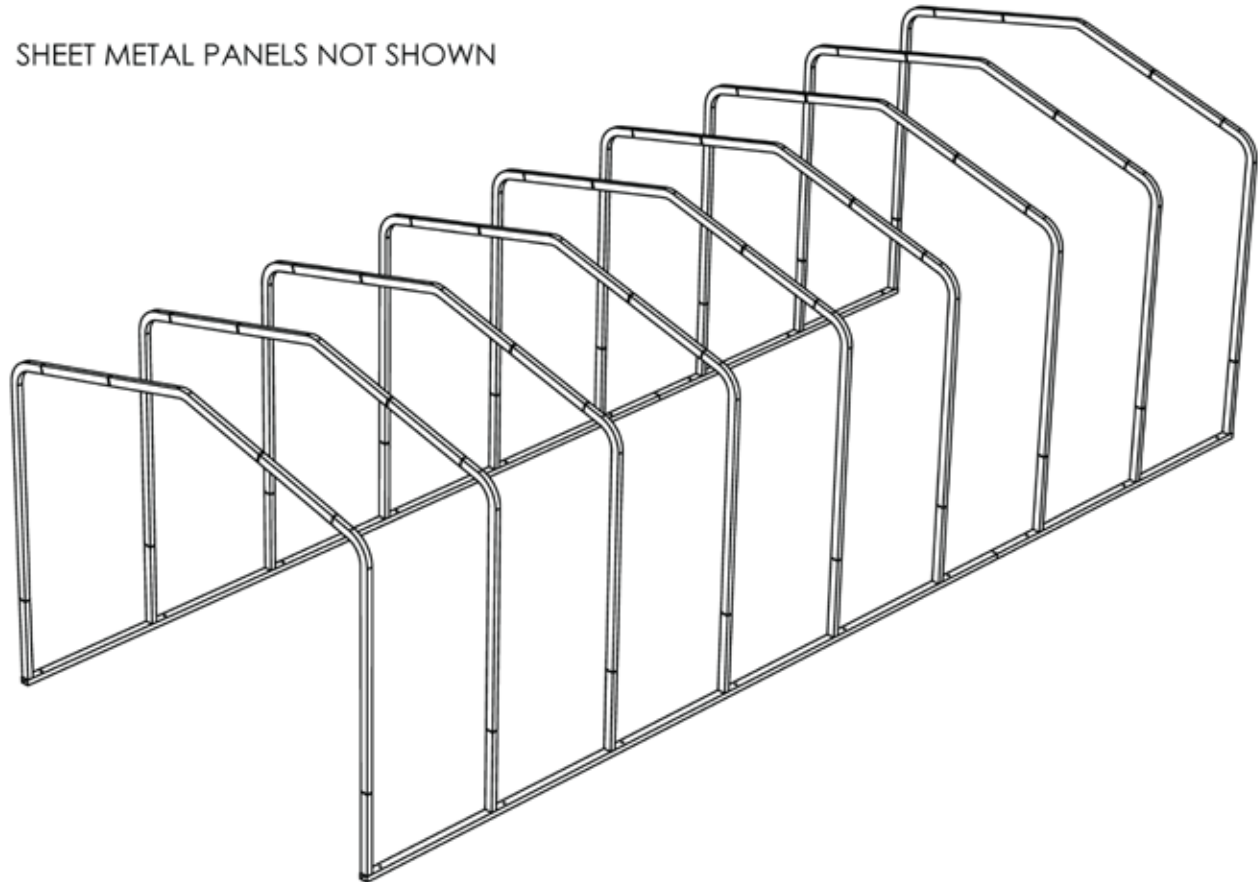


SHEET METAL PANELS NOT SHOWN



DESIGN CRITERIA:

STRUCTURE SIZE: 14' x 36' x 10'
ON CENTER SPACING: 4.5'
SHEET METAL: 26GA, 5 RIB 3/4"
OCCUPANCY GROUP: U-1

WIND LOAD: 85MPH, EXPOSURE (B)
WIND IMPORTANCE FACTOR: 1
ROOF LIVE LOAD: 25PSF
SEISMIC CATEGORY: D

CODE COMPLIANCE: IBC 2006

PROJECT:

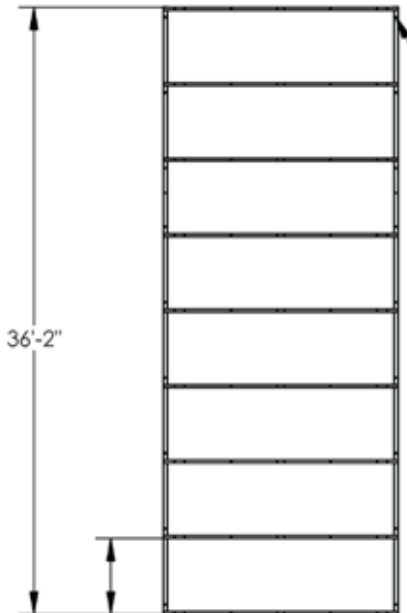
TITLE: 14' x 36' x 10' CARPORT ON LONG PIN BASE RAILS

DWG NO: SW014361045LP P1

DRAWN BY: A. STRICKER

DATE: 10/28/10

8 7 6 5 4 3 2 1



ANCHOR AT EVERY POST

MATERIALS:

BASE RAILS, HEIGHT EXTENSIONS:
2" X 3" 15 GA 1018 STEEL, 60 KSI, ASTM A500-B

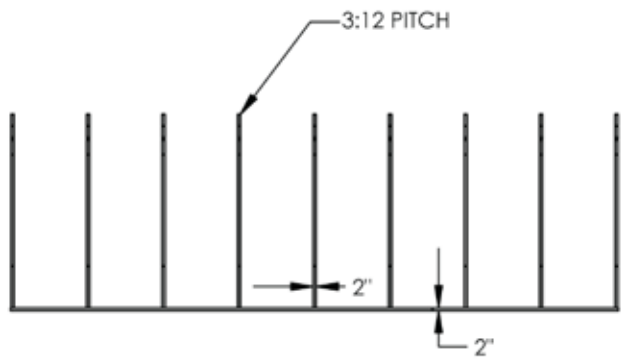
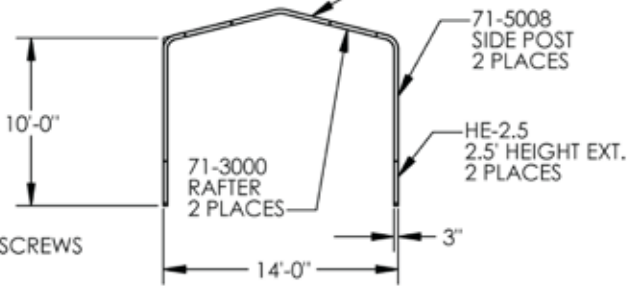
SIDE POSTS, RAFTERS, PEAKS:
2" X 3" 14 GA 1018 STEEL, 60 KSI, ASTM A500-B

BRACKETS:
COLLAR TIE, END WALL VERTICAL: 14GA, 50 KSI STEEL, ASTM A500-A
BK-10 ANGLE BRACKET: 12GA, 50 KSI STEEL, ASTM A500-A

SHEET METAL: 26 GA. 80 KSI STEEL
ALLOWABLE WIND PRESSURE LOAD ON 4.5' CENTERS: 49 PSF
ALLOWABLE GRAVITY LOAD ON 4.5' CENTERS: 29 PSF
CAN BE INCREASED BY 1/3 FOR WIND LOADING.
PANELS ARE CLASS (A) FIRE RATED

NO SHEET METAL SHOWN

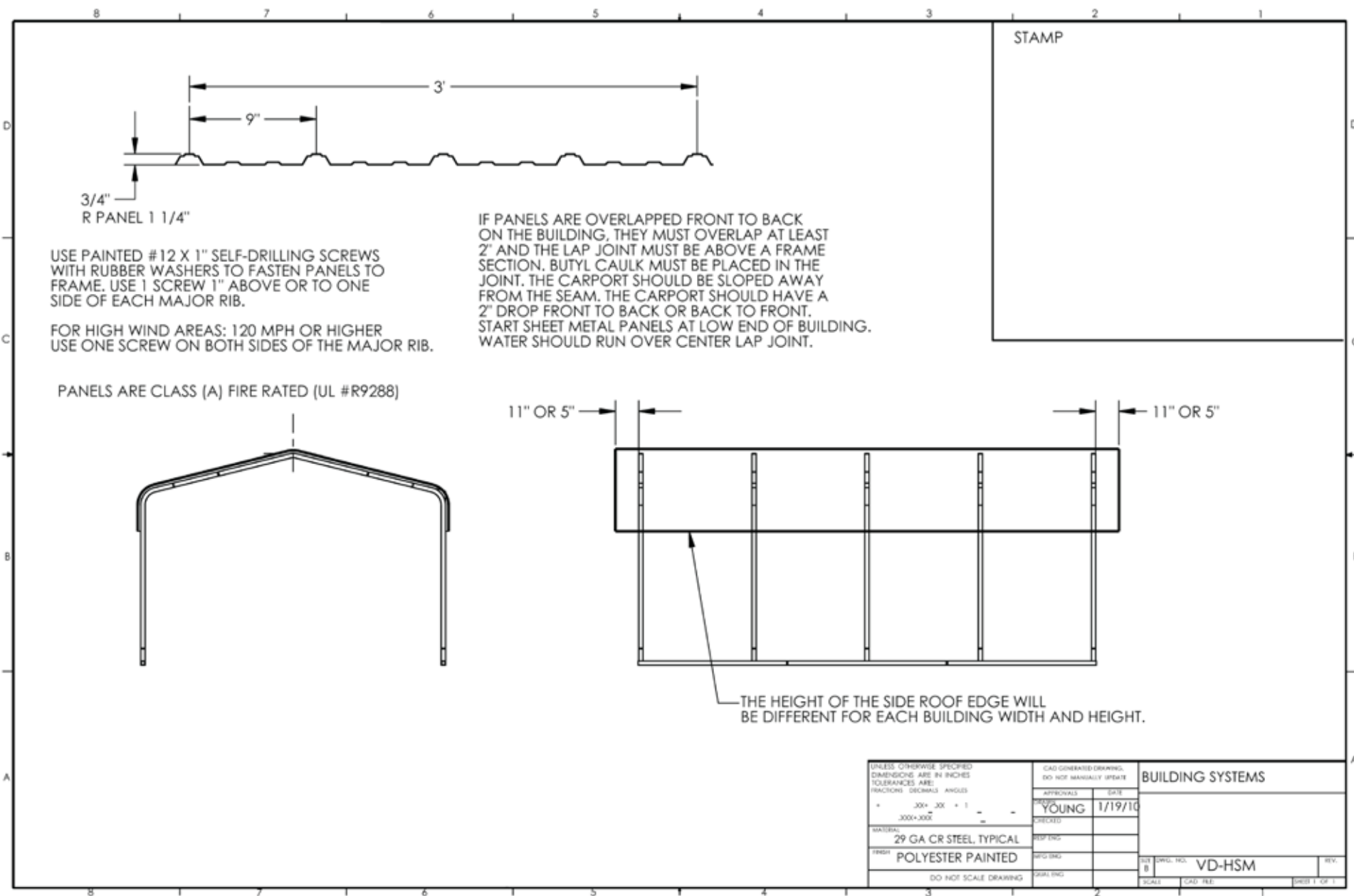
4'-6"
TYP.



24 SCREWS

PROJECT:	
TITLE: 14' x 36' x 10' MADE FOR LONG PIN BASE RAILS	
DWG NO: SW014361045LP P2	
DRAWN BY: A. STRICKER	DATE:

8 7 6 5 4 3 2 1



STAMP

3/4"
R PANEL 1 1/4"

3'

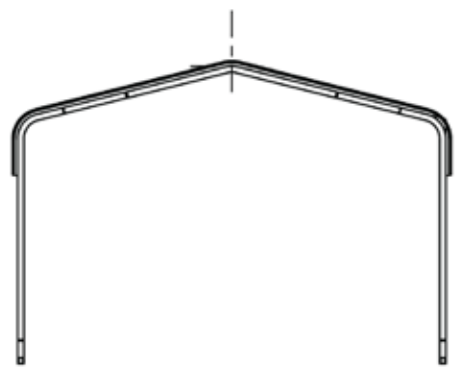
9"

USE PAINTED #12 X 1" SELF-DRILLING SCREWS WITH RUBBER WASHERS TO FASTEN PANELS TO FRAME. USE 1 SCREW 1" ABOVE OR TO ONE SIDE OF EACH MAJOR RIB.

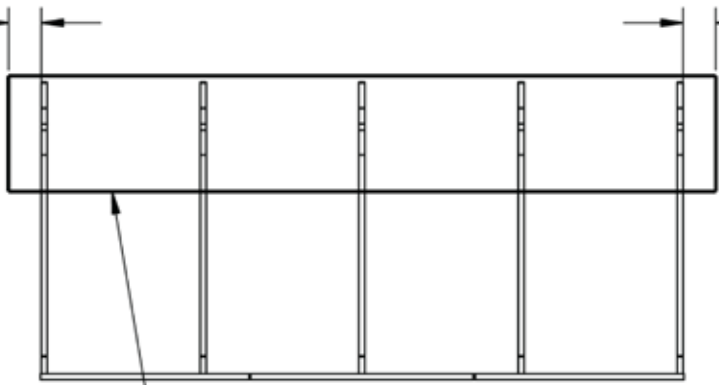
FOR HIGH WIND AREAS: 120 MPH OR HIGHER USE ONE SCREW ON BOTH SIDES OF THE MAJOR RIB.

PANELS ARE CLASS (A) FIRE RATED (UL #R9288)

IF PANELS ARE OVERLAPPED FRONT TO BACK ON THE BUILDING, THEY MUST OVERLAP AT LEAST 2" AND THE LAP JOINT MUST BE ABOVE A FRAME SECTION. BUTYL CAULK MUST BE PLACED IN THE JOINT. THE CARPORT SHOULD BE SLOPED AWAY FROM THE SEAM. THE CARPORT SHOULD HAVE A 2" DROP FRONT TO BACK OR BACK TO FRONT. START SHEET METAL PANELS AT LOW END OF BUILDING. WATER SHOULD RUN OVER CENTER LAP JOINT.



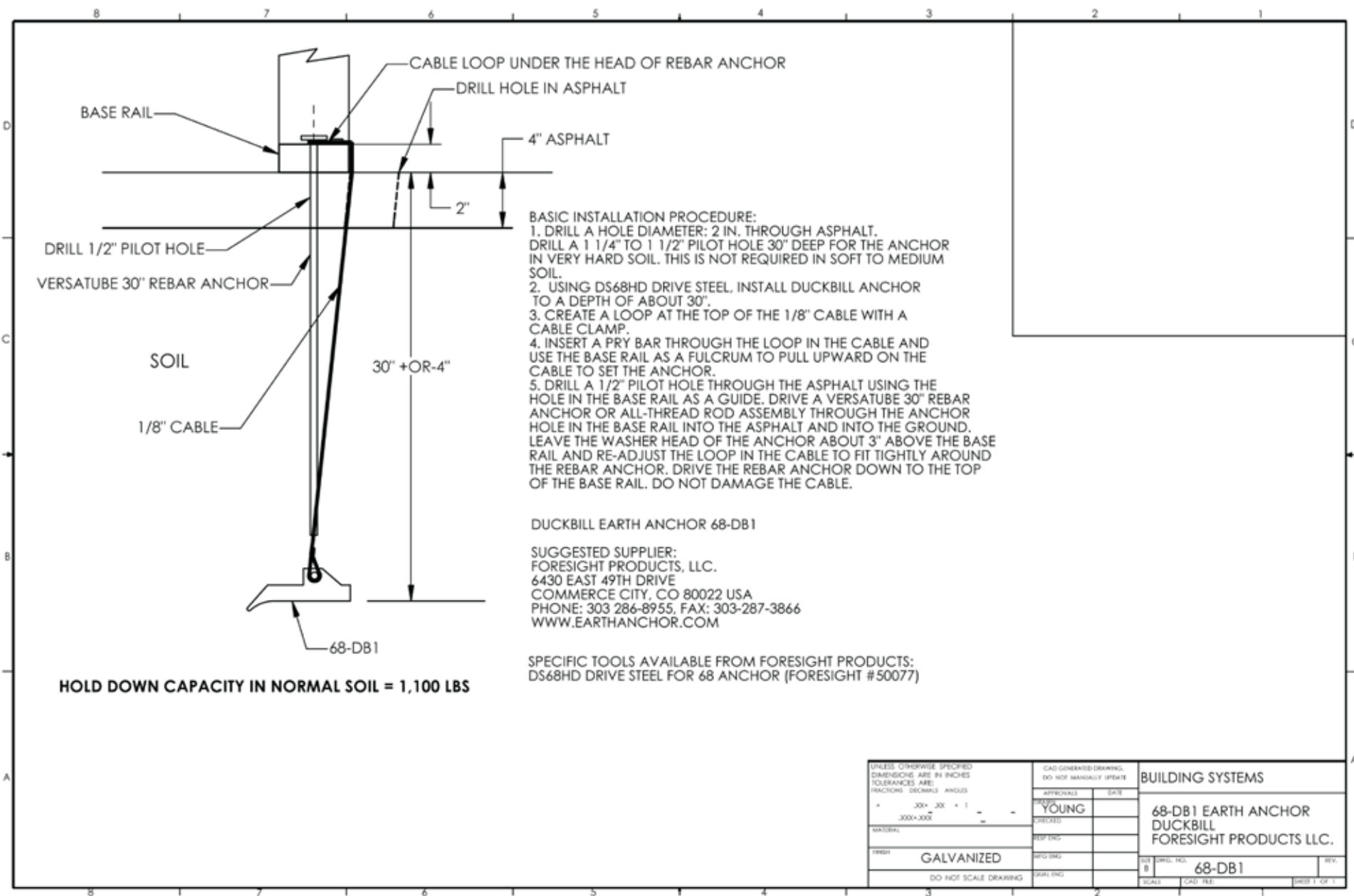
11" OR 5"



11" OR 5"

THE HEIGHT OF THE SIDE ROOF EDGE WILL BE DIFFERENT FOR EACH BUILDING WIDTH AND HEIGHT.

UNLESS OTHERWISE SPECIFIED DIMENSIONS ARE IN INCHES TOLERANCES ARE: FRACTIONS DECIMALS ANGLES + .00* .00 + .1 .000+.000 - - - MATERIAL: 29 GA CR STEEL TYPICAL FINISH: POLYESTER PAINTED DO NOT SCALE DRAWING	CAD GENERATED DRAWING. DO NOT MANUALLY SPEAK		BUILDING SYSTEMS	
	APPROVALS PROJECT YOUNG	DATE 1/19/10		
	DESIGNED CHECKED REVISIONS			
	TITLE B	DWG. NO. VD-HSM	SCALE 	REV.



BASIC INSTALLATION PROCEDURE:

1. DRILL A HOLE DIAMETER: 2 IN. THROUGH ASPHALT. DRILL A 1 1/4" TO 1 1/2" PILOT HOLE 30" DEEP FOR THE ANCHOR IN VERY HARD SOIL. THIS IS NOT REQUIRED IN SOFT TO MEDIUM SOIL.
2. USING DS68HD DRIVE STEEL. INSTALL DUCKBILL ANCHOR TO A DEPTH OF ABOUT 30".
3. CREATE A LOOP AT THE TOP OF THE 1/8" CABLE WITH A CABLE CLAMP.
4. INSERT A PRY BAR THROUGH THE LOOP IN THE CABLE AND USE THE BASE RAIL AS A FULCRUM TO PULL UPWARD ON THE CABLE TO SET THE ANCHOR.
5. DRILL A 1/2" PILOT HOLE THROUGH THE ASPHALT USING THE HOLE IN THE BASE RAIL AS A GUIDE. DRIVE A VERSATUBE 30" REBAR ANCHOR OR ALL-THREAD ROD ASSEMBLY THROUGH THE ANCHOR HOLE IN THE BASE RAIL INTO THE ASPHALT AND INTO THE GROUND. LEAVE THE WASHER HEAD OF THE ANCHOR ABOUT 3" ABOVE THE BASE RAIL AND RE-ADJUST THE LOOP IN THE CABLE TO FIT TIGHTLY AROUND THE REBAR ANCHOR. DRIVE THE REBAR ANCHOR DOWN TO THE TOP OF THE BASE RAIL. DO NOT DAMAGE THE CABLE.

DUCKBILL EARTH ANCHOR 68-DB1

SUGGESTED SUPPLIER:
 FORESIGHT PRODUCTS, LLC.
 6430 EAST 49TH DRIVE
 COMMERCE CITY, CO 80022 USA
 PHONE: 303 286-8955, FAX: 303-287-3866
 WWW.EARTHANCHOR.COM

SPECIFIC TOOLS AVAILABLE FROM FORESIGHT PRODUCTS:
 DS68HD DRIVE STEEL FOR 68 ANCHOR (FORESIGHT # 50077)

HOLD DOWN CAPACITY IN NORMAL SOIL = 1,100 LBS

UNLESS OTHERWISE SPECIFIED DIMENSIONS ARE IN INCHES TOLERANCES ARE: FRACTIONS DECIMALS ANGLES		CAD GENERATED DRAWING. DO NOT MANUALLY SPEAK		BUILDING SYSTEMS	
+ .000 +.000 +.000		APPROVALS	DATE	68-DB1 EARTH ANCHOR DUCKBILL FORESIGHT PRODUCTS LLC.	
MATERIAL		PROJECT		REV.	
FINISH		DRAWN		TIT 68-DB1	
DO NOT SCALE DRAWING		CHECKED		SCALE	LAD TREE
		REVISION		SHEET 1 OF 1	

WEDGE ANCHOR DETAIL

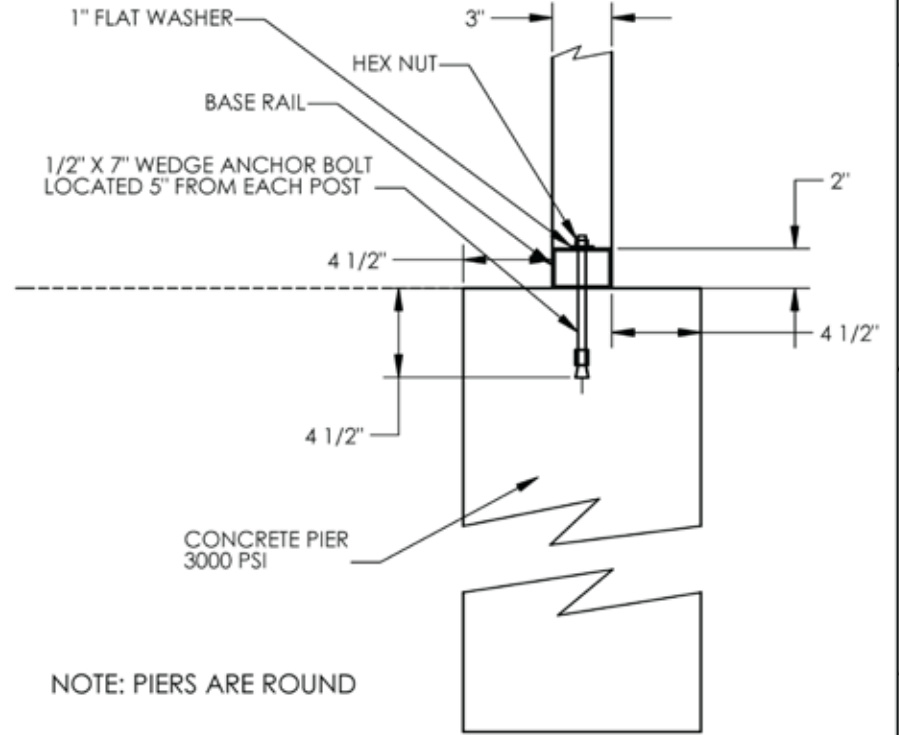
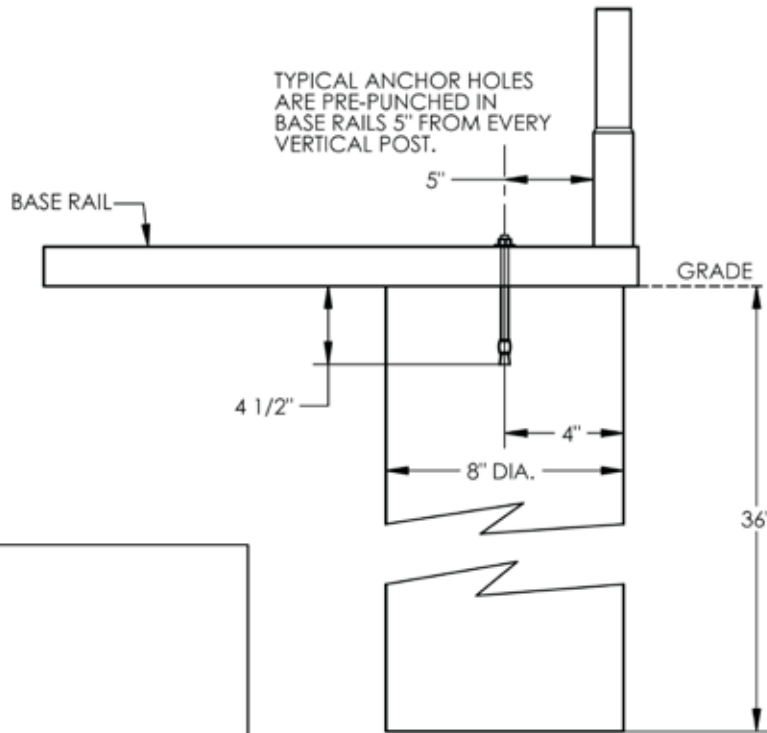
INSTALLATION: USING HAMMER DRILL AND A 1/2" CONCRETE DRILL BIT, DRILL A HOLE INTO THE CONCRETE 5" TO 5 1/2" DEEP. PLACE THE FLAT WASHER ON THE BOLT AND INSTALL THE NUT UNTIL ABOUT 2 THREADS ARE EXPOSED ABOVE THE NUT. TAP THE ANCHOR THROUGH THE BASE RAIL INTO THE HOLE UNTIL THE WASHER TOUCHES THE TOP OF THE BASE RAIL. NOW, TIGHTEN THE NUT TO SET THE ANCHOR. DO NOT OVER TIGHTEN AND CRUSH THE TUBE.

ANCHOR HOLD DOWN FORCE 1,935 LBS.
(ITW RED HEAD) ESR-2251.

ANCHOR HOLD DOWN FORCE 2,020 LBS
(SIMPSON STRONG-TIE CO. INC.) ESR-1771.

ANCHOR HOLD DOWN FORCE 2,425
(POWERS FASTENERS, INC.) ESR-2818

SPECIAL INSPECTION IS NOT REQUIRED
FOR OCCUPANCY GROUP: R-3 AND U-1.



UNLESS OTHERWISE SPECIFIED DIMENSIONS ARE IN INCHES TOLERANCES ARE: FRACTIONS DECIMALS ANGLES + .000 + .001 + .1 - .000 - .002 -	CAD GENERATED DRAWING. DO NOT MANUALLY SPEAK		BUILDING SYSTEMS	
	APPROVALS	DATE	WEDGE ANCHOR DETAIL 1/2" X 7" IN CONCRETE PIER	
PROJECT YOUNG		TITLE NO. VD-WA.5X7CP		
MATERIAL 3000 PSI CONCRETE	DESIGNED			
FINISH	CHECKED			
DO NOT SCALE DRAWING	DATE			
	SCALE: 1/4" = 1'-0"	CAD FILE:	SHEET 1 OF 1	